

Light efficiency:

119 Lumen/Watt

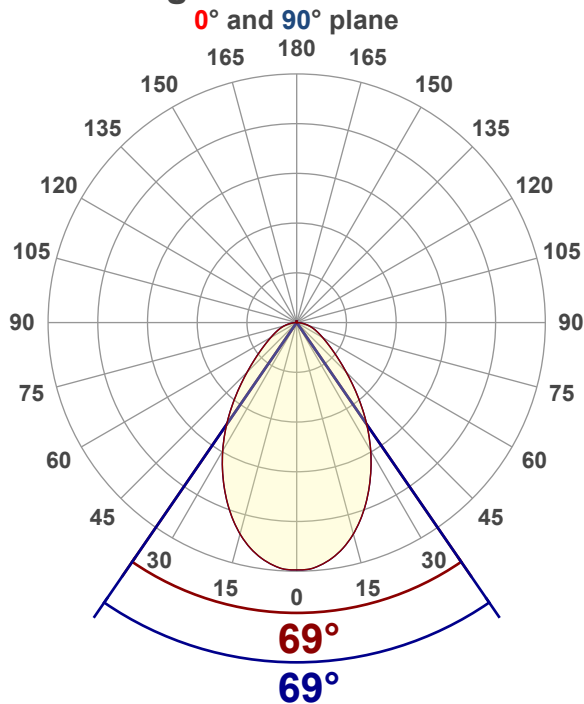
Color temperature:

4151 K

Light quality:

CRI:83.6, R_g:91.1, R_f:82.3**P: - / V: - / F: -****Output: 2239 lm****Peak: 1478 cd****Power: 18.8 W****Voltage: 121 V****Current: 0.158 A****PF: 0.99****THD: 7.25 %**

Angular Distribution



Product name:

EDGE-33-WH - DLC - 40K 20W

Test Date:

2019-05-29

Beam Angle (50% of the brightness of the centre):

69°

Field Angle (10% of the brightness of the centre):

127.7°

Cut Off Angle (2.5% of the brightness of the centre):

164.3°

Beam Details

*measured at centre of beam

Mounting Height (feet)\(meter)	Lux*	Footcandles*	Beam width (feet) / (meter)
4 ft / 1.2 m	994 lx	92 fc	5.5 ft / 1.7 m
8 ft / 2.4 m	249 lx	23 fc	11 ft / 3.4 m
12 ft / 3.7 m	110 lx	10 fc	16.5 ft / 5 m
16 ft / 4.9 m	62 lx	6 fc	22 ft / 6.7 m
20 ft / 6.1 m	40 lx	4 fc	27.5 ft / 8.4 m

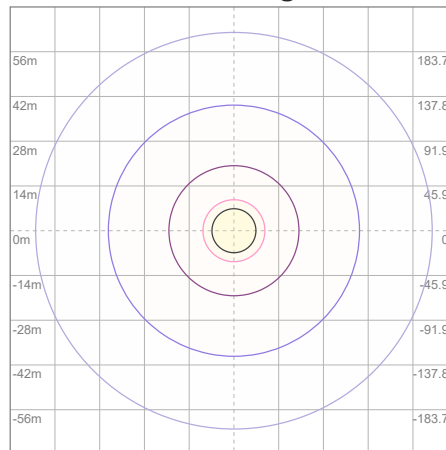
Beam center

Photometric Testing Report

Zonal Lumen Summary

Zone	Lumen	%Luminaire
0-30	979	43.72%
0-40	1429	63.82%
0-60	1967	87.85%
60-90	247	11.03%
70-100	111	4.96%
90-120	10.8	0.48%
0-90	2214	98.88%
90-180	25.0	1.12%
0-180	2239	100.00%

ISO Lux Diagram



Lux at center:	159 lx
3%	4.77 lx
5%	7.95 lx
10%	15.90 lx
30%	47.70 lx
50%	79.50 lx

Conditions:
Number of planes: 8
Lux distribution on a surface when lamp is mounted at 3.05 meters from the surface.

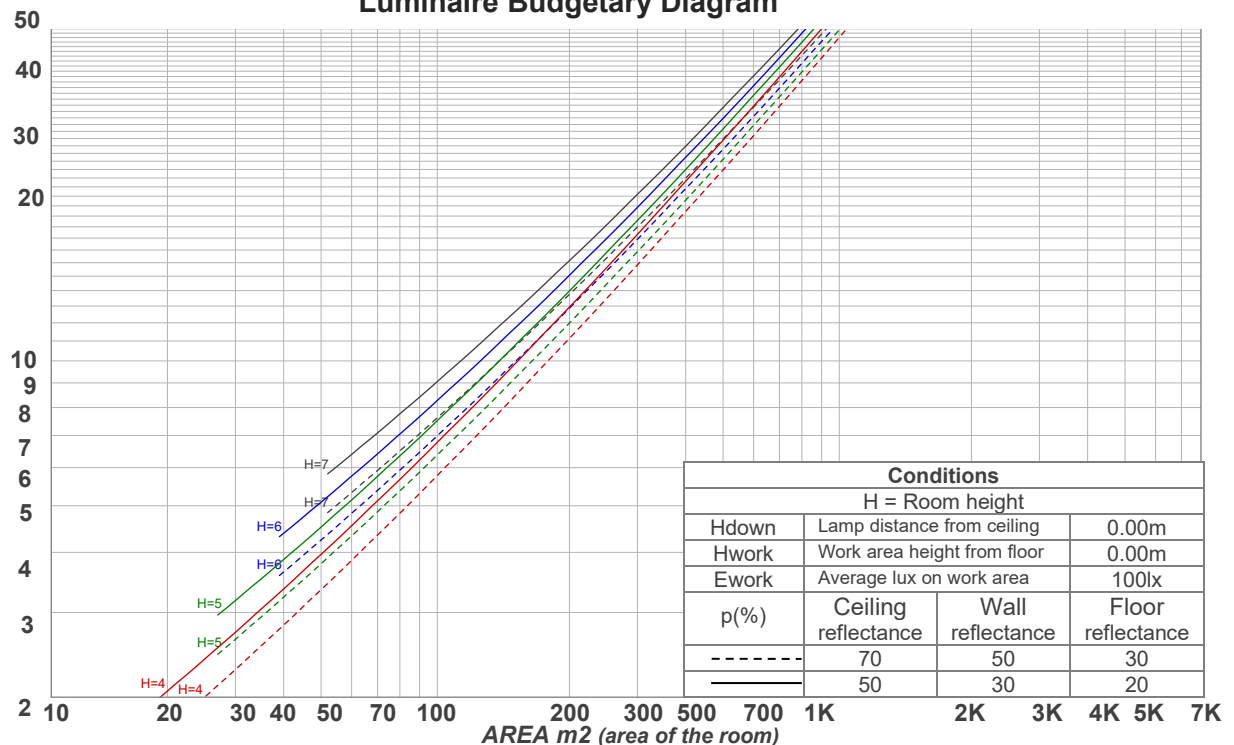
Mounting height: 3.05 meters (10 feet)

Coefficients of Utilization

Ceiling reflectance	80				70				50			30			10			0
Wall reflectance	70	50	30	10	70	50	30	10	50	30	10	50	30	10	50	30	10	0
Floor reflectance	20	20	20	20	20	20	20	20	20	20	20	20	20	20	20	20	20	0
RCR	(RCR: Room Cavity Ratio) Room Values are expressed as percentage of Lumens delivered to the task surface																	
0	119	119	119	119	116	116	116	116	110	110	110	106	106	106	101	101	101	99
1	111	107	103	100	108	104	101	98	100	97	95	96	94	92	92	91	89	87
2	103	96	90	85	100	94	89	84	90	86	82	87	83	80	84	81	78	76
3	95	86	80	74	93	85	78	73	82	76	72	79	75	71	76	73	69	67
4	89	78	71	65	86	77	70	65	75	69	64	72	67	63	70	66	62	60
5	83	72	64	58	81	70	63	58	68	62	57	66	61	57	65	60	56	54
6	77	66	58	52	75	65	57	52	63	56	52	61	56	51	60	55	51	49
7	72	61	53	48	71	60	52	47	58	52	47	57	51	47	55	50	46	44
8	68	56	49	43	66	55	48	43	54	48	43	53	47	43	52	46	42	41
9	64	52	45	40	63	52	45	40	50	44	40	49	43	39	48	43	39	37
10	60	49	42	37	59	48	41	37	47	41	37	46	40	36	45	40	36	35

LAMPS (number of lamps)

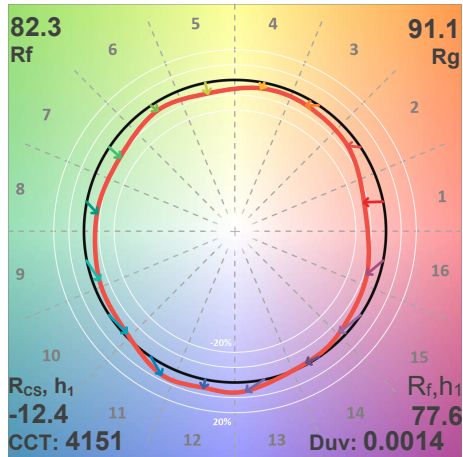
Luminaire Budgetary Diagram



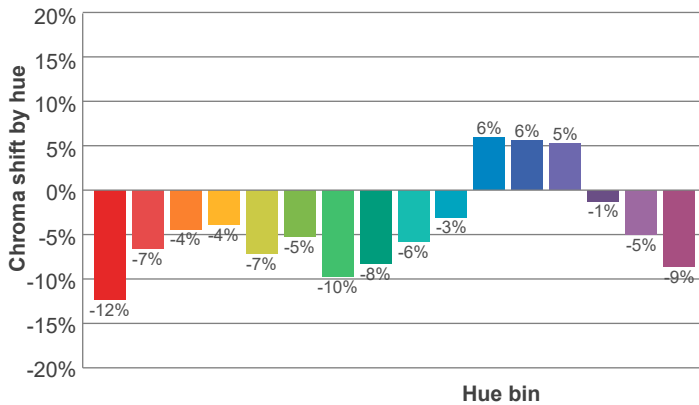
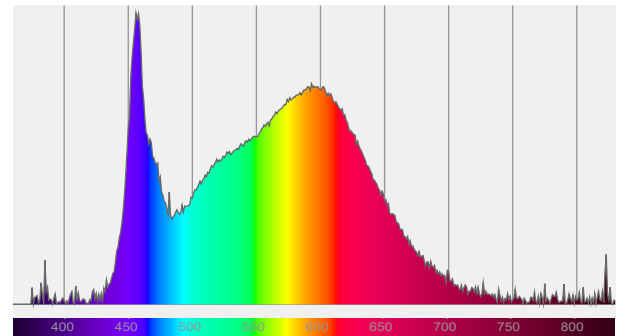
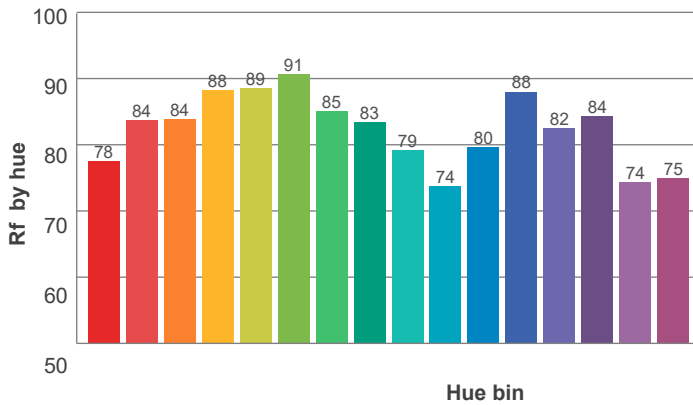
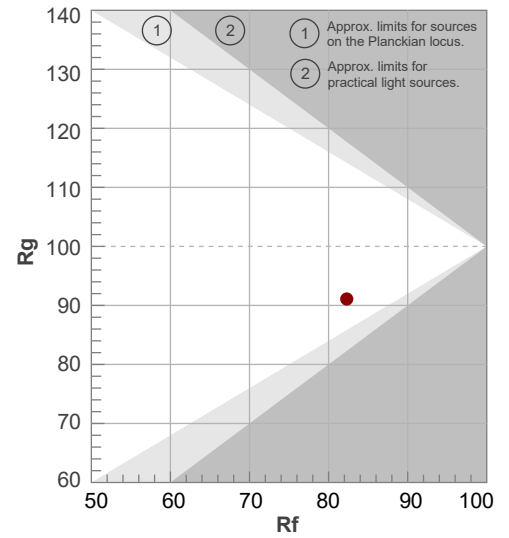
Photometric Testing Report

ANSI/IES TM-30-18

P: - / V: - / F: -



Hue Bin	R _f	Shifts (%)	
		Chroma	Hue
1	78	-12%	2%
2	84	-7%	5%
3	84	-4%	7%
4	88	-4%	1%
5	89	-7%	0%
6	91	-5%	-2%
7	85	-10%	1%
8	83	-8%	6%
9	79	-6%	14%
10	74	-3%	16%
11	80	6%	12%
12	88	6%	0%
13	82	5%	-13%
14	84	-1%	-9%
15	74	-5%	-17%
16	75	-9%	-11%



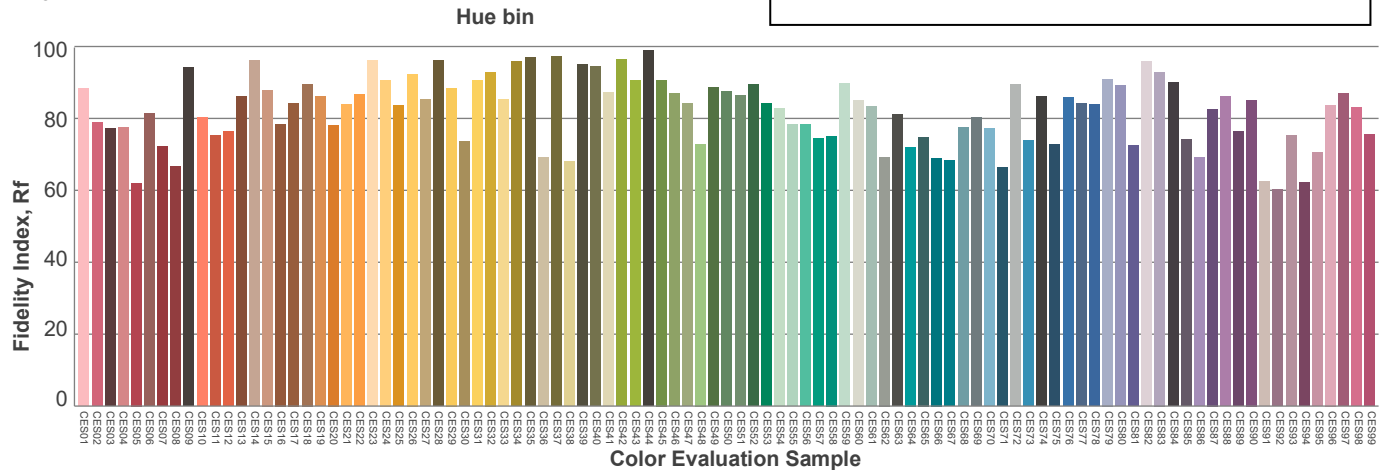
Red: 20.5%, Power=8.7mW

Blue: 18.4%, Power=26.1mW

Green: 29.9%, Power=28.3mW

UVA: 0.5%, Power=3.0mW

Dominant Wavelength: 581nm

1st Peak Wavelength: 456nm2nd Peak Wavelength: 593nm

Glare Evaluation According to UGR

Corrected, comprehensive UGR table according to 117-1995, S/H ratio=0.25

p Ceiling		70	70	50	50	30	70	70	50	50	30
p Walls		50	30	50	30	30	50	30	50	30	30
p Floor		20	20	20	20	20	20	20	20	20	20
Room size H = mounting height above eye level X Y		Viewing direction at right angles to lamp axis					Viewing direction parallel to lamp axis				
2H	2H	10.6	11.5	10.8	11.8	12.0	10.6	11.5	10.8	11.8	12.0
	3H	11.4	12.5	11.9	12.7	13.0	11.4	12.5	11.9	12.7	13.0
	4H	11.9	12.9	12.3	13.2	13.4	11.9	12.9	12.3	13.2	13.4
	6H	12.4	13.2	12.7	13.5	13.9	12.4	13.2	12.7	13.5	13.9
	8H	12.5	13.3	12.9	13.7	14.1	12.5	13.3	12.9	13.7	14.1
	12H	12.6	13.4	13.0	13.7	14.2	12.6	13.4	13.0	13.7	14.2
4H	2H	10.9	11.8	11.3	12.1	12.4	10.9	11.8	11.3	12.1	12.4
	3H	12.1	12.9	12.5	13.3	13.7	12.1	12.9	12.5	13.3	13.7
	4H	12.7	13.4	13.1	13.8	14.4	12.7	13.4	13.1	13.8	14.4
	6H	13.2	13.9	13.7	14.3	14.7	13.2	13.9	13.7	14.3	14.7
	8H	13.4	14.0	13.9	14.4	14.8	13.4	14.0	13.9	14.4	14.8
	12H	13.5	14.0	14.0	14.5	15.0	13.5	14.0	14.0	14.5	15.0
8H	4H	12.9	13.6	13.4	13.9	14.3	12.9	13.6	13.4	13.9	14.3
	6H	13.6	14.1	14.1	14.6	15.1	13.6	14.1	14.1	14.6	15.1
	8H	13.9	14.3	14.4	14.8	15.5	13.9	14.3	14.4	14.8	15.5
	12H	14.1	14.4	14.7	15.0	15.6	14.1	14.4	14.7	15.0	15.6
12H	4H	12.9	13.4	13.4	13.9	14.4	12.9	13.4	13.4	13.9	14.4
	6H	13.7	14.1	14.2	14.6	15.3	13.7	14.1	14.2	14.6	15.3
	8H	14.0	14.3	14.6	14.8	15.5	14.0	14.3	14.6	14.8	15.5
Variation of the observer position for the luminaire distance S											
S = 1.0H		0.2 / -0.3					0.2 / -0.3				
S = 1.5H		0.6 / -0.6					0.6 / -0.6				
S = 2.0H		1.1 / -0.9					1.1 / -0.9				
Corrected glare indices referring to 2239 lm total luminous flux											